



## REPUBLIC OF KENYA

### MINISTRY OF ENVIRONMENT AND FORESTRY

#### KENYA METEOROLOGICAL DEPARTMENT – KISUMU COUNTY

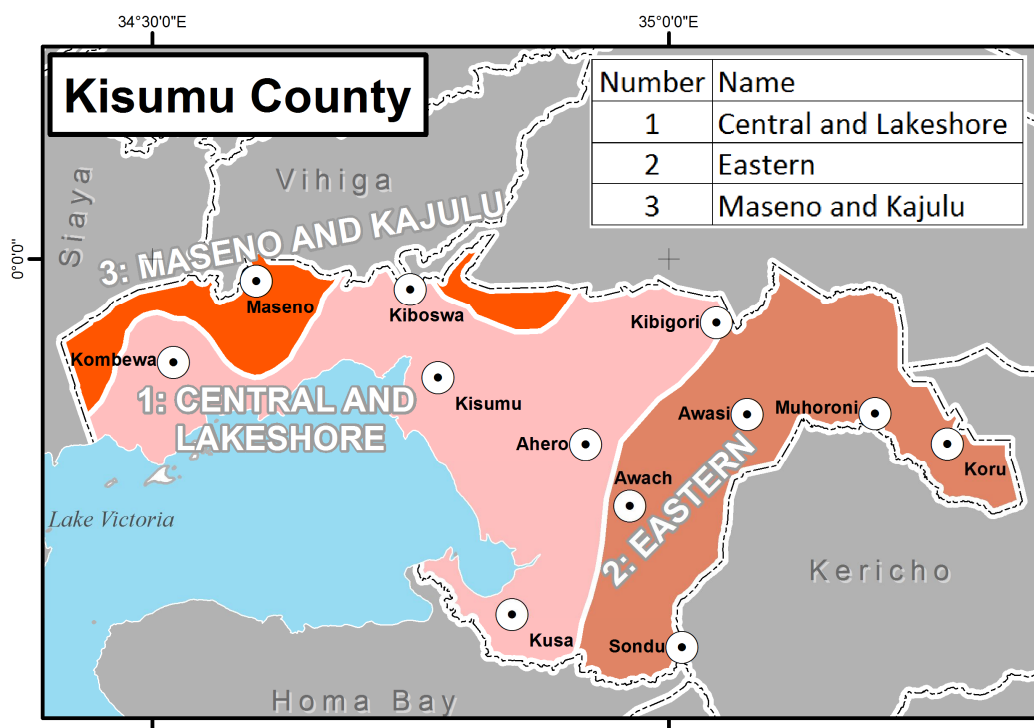
Kisumu International Airport, KCAA Building, P. O. Box 336-40100 Kisumu, Kenya

Tel: 020-2393986, 0773-609702

E-mail: [kisumumetstation@gmail.com](mailto:kisumumetstation@gmail.com), [cdmkisumu@meteo.go.ke](mailto:cdmkisumu@meteo.go.ke)

Date: 31<sup>st</sup> May 2019

## KISUMU COUNTY MONTHLY WEATHER FORECAST FOR JUNE 2019



**Period of forecast: June 1<sup>st</sup> to June 30<sup>th</sup> 2019**

**Summary** The month of June is generally dry over most parts of the country except over Coastal and Western regions, including Kisumu County, which continues receiving significant rainfall. During the month of May, warmer than average Equatorial sea-surface temperatures (SSTs) prevailed along the East African coast and over the Pacific Ocean, with cooler waters over eastern Indian and Atlantic Oceans. These ocean conditions and presence of the rain-bearing Inter-Tropical Convergence Zone over Kenya were conducive for good rainfall. The expected evolution of the Oceans and associated weather systems will lead to near-average to

*slightly above-average (slightly enhanced) rainfall in the month of June 2019 over Kisumu County. The County will receive more rainfall amounts, and the rainfall will be well distributed in time and space during the first half than second half of June 2019. The day-time temperatures will be more than the temperatures that are normally observed during the month of June.*

**Forecast for Central/Lakeshore and Maseno/Kajulu climatic zones 1 and 3  
(includes Kisumu, Kombewa, Ahero, Kiboswa, Kibigori, Maseno, Kajulu etc)**

The outlook for June 2019 indicates that these zones will experience near-average to slightly above-average (slightly enhanced) rainfall. The moderate to heavy afternoon/night showers will occur over many to most places and they will be accompanied by thunderstorms. Significant rainfall amounts will be experienced during the first half of June 2019 than in the second half. The space and time distribution of rainfall will be better during this period with very short dry spells. The month of June 2019 will be characterized by higher than average day-time temperatures. The day-time temperatures during this period will be warmer than usual with afternoon highs ranging from 26° – 29°C with night time lows of 16° to 19°C.

The rainfall amounts will reduce during the second half of the month. Light to moderate afternoon/night showers over few to many places will be accompanied by thunderstorms. The space and time distribution of rainfall is expected to be poor during this period with long dry spells. The day-time temperatures during this period will be warmer than usual with afternoon day-time high temperatures will range between 27° – 30°C with night time lows of 15° to 18°C.

**Progress of rainy season**

The assessment of March-April-May 2019 seasonal rainfall indicates that rainfall performance was generally poor over most parts of the country. However, Meteorological stations like Kisumu, Suba, Kisii, Kericho and Kakamega in the Western parts of Kenya recorded near-average rainfall (between 75 and 90 percent of their March-May seasonal long term averages). The seasonal rainfall was characterized by late onset and poor distribution in time and space. Most of the seasonal rains occurred during the last ten days of April and in May while the better part of the County remained generally sunny and dry in March and most of April 2019. The cooler than average equatorial Sea Surface Temperatures along East African coast warmed with time, while the rain bearing Inter Tropical Convergence Zone (ITCZ) moved into Kenya from the south.

**Advice to farmers from Ministry of Agriculture:**

- Consult your local agricultural extension officer for advice on how to plan farming activities in the light of this forecast.

### **SMS version of the forecast**

Kisumu month Jun,1,3,slightly enhanced rain,warmer,thunder,Half1 mo/he rain many/most, good distribution,Half2 li/mo rain few/many,poor doistribution-KMD

### **Forecast for Eastern climatic zone 2 (includes Muhoroni, Chemelil, Awasi, Sondu, Koru etc)**

The outlook for June 2019 indicates that these zones will experience near-average to slightly above-average (slightly enhanced) rainfall. The moderate to heavy afternoon/night showers will occur over many to most places and they will be accompanied by thunderstorms. Significant rainfall amounts will be experienced during the first half of June 2019 than in the second half. The space and time distribution of rainfall will be better during this period with very short dry spells. The month of June 2019 will be characterized by higher than average day-time temperatures. The day-time temperatures during this period will be warmer than usual with afternoon highs ranging from 25° – 28°C with night time lows of 15° to 18°C.

The rainfall amounts will reduce during the second half of the month. Light to moderate afternoon/night showers over few to many places will be accompanied by thunderstorms. The space and time distribution of rainfall is expected to be poor during this period with long dry spells. The day-time temperatures during this period will be warmer than usual with afternoon day-time high temperatures will range between 26° – 29°C with night time lows of 14° to 17°C.




### **Advice to farmers from Ministry of Agriculture:**

- Consult your local agricultural extension officer for advice on how to plan farming activities in the light of this forecast.

### **SMS version of the forecast**

Kisumu month Jun,2,slightly enhanced rain,warmer,thunder,Half1 mo/he rain many/most, good distribution,Half2 li/mo rain few/many,poor doistribution-KMD

#### **KEY**

<b>Rainfall Categories</b>	<b>Rainfall amounts</b>	<b>Rainfall symbols</b>	<b>Rainfall Distribution</b>	<b>Aerial coverage</b>
Light rain	<5 mm		Few places	Less than 33%
Moderate rain	5-20 mm		Many places	33% -67%
Heavy rain	20-50 mm		Most places	More than 67%
Very heavy rain	>50 mm			

### **For further information, please contact:**

County Director of Meteorology – Paul N. Oloo

Mobile: 0721 624 918

Email: [paul\\_oloo@yahoo.com](mailto:paul_oloo@yahoo.com)