

ROOF NOTES

Pitch -15 degrees
Approved gauge 26 pre-painted roofing sheets on 50x50mm tim. purlins on 100x50mm tim trusses @ 1800mm cc all to engineers detail
225x25mm tim fascia and verge boards
600mm wide t&g eave boading to det

Approved gauge 26 pre-painted roofing sheets to canopy on structural steel supports
300X200mm vibrated .r. c - 1:1.5/20-25 aggregate (4Y12) ring beam to str. eng detail

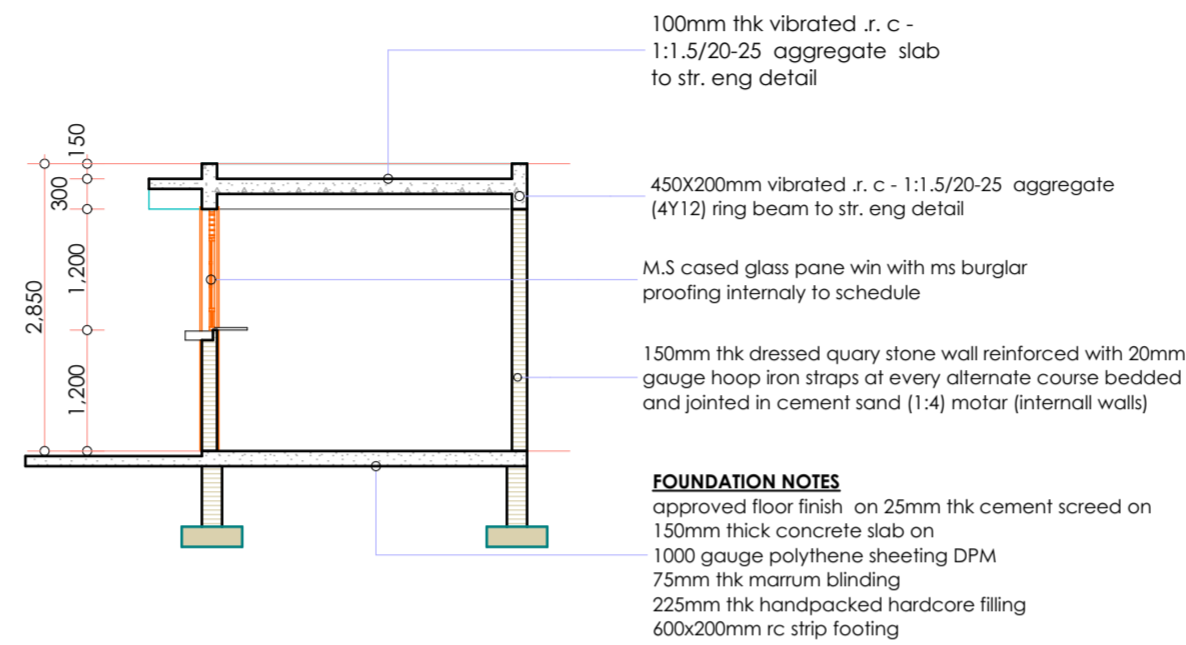
M.S cased glass pane win with ms burglar proofing internally to schedule

150mm thk dressed quarry stone wall reinforced with 20mm gauge hoop iron straps at every alternate course bedded and jointed in cement sand (1:4) motar (internal walls)

FOUNDATION NOTES

approved floor finish on 25mm thk cement screed on 150mm thick concrete slab on 1000 gauge polythene sheeting DPM 75mm thk marrum blinding 225mm thk handpacked hardcore filling 600x200mm rc strip footing

S3 Typical Section for Sacco Offices
Scale 1:100



100mm thk vibrated .r. c - 1:1.5/20-25 aggregate slab to str. eng detail

450X200mm vibrated .r. c - 1:1.5/20-25 aggregate (4Y12) ring beam to str. eng detail

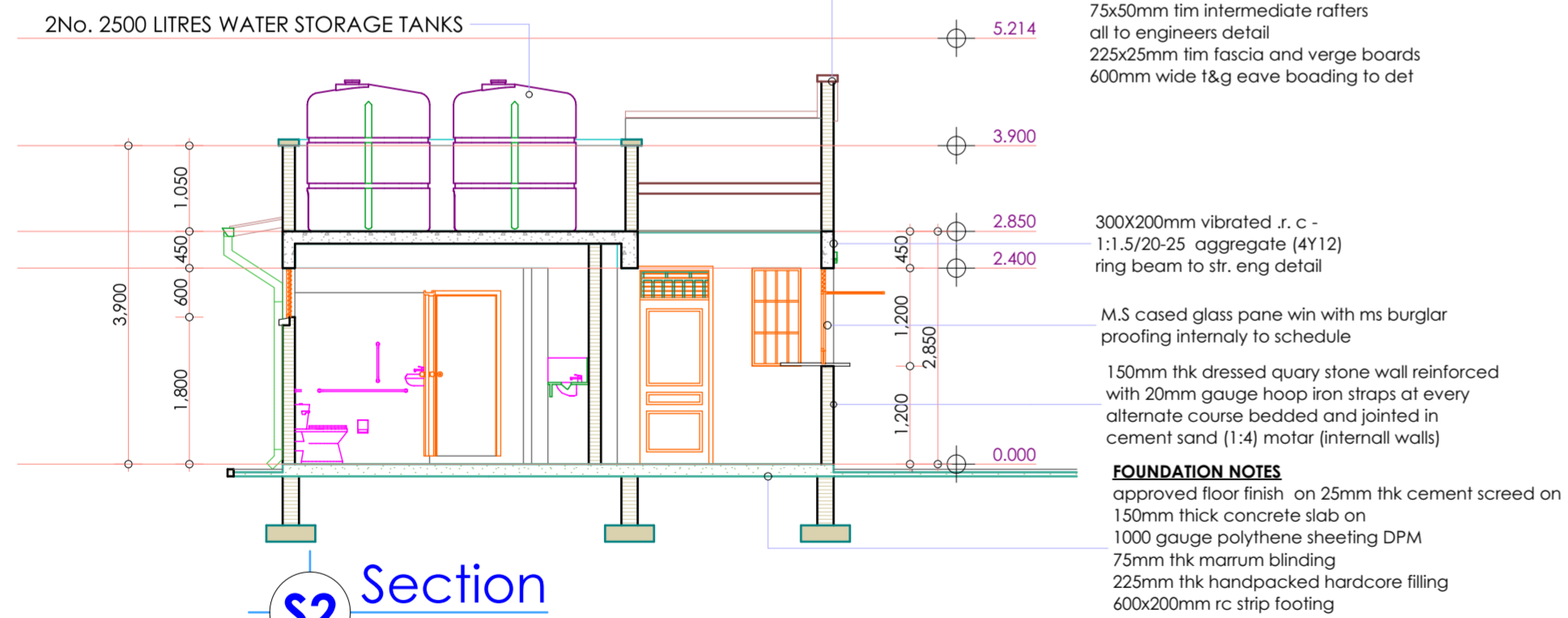
M.S cased glass pane win with ms burglar proofing internally to schedule

150mm thk dressed quarry stone wall reinforced with 20mm gauge hoop iron straps at every alternate course bedded and jointed in cement sand (1:4) motar (internal walls)

FOUNDATION NOTES

approved floor finish on 25mm thk cement screed on 150mm thick concrete slab on 1000 gauge polythene sheeting DPM 75mm thk marrum blinding 225mm thk handpacked hardcore filling 600x200mm rc strip footing

S5 Typical Section for Bus Booking Offices
Scale 1:100



ROOF NOTES

Pitch -10 degrees
Approved gauge 26 pre-painted roofing sheets on 50x50mm tim. purlins on 100x50mm tim trusses @ 1800mm cc with 75x50mm tim intermediate rafters all to engineers detail
225x25mm tim fascia and verge boards
600mm wide t&g eave boading to det

300X200mm vibrated .r. c - 1:1.5/20-25 aggregate (4Y12) ring beam to str. eng detail

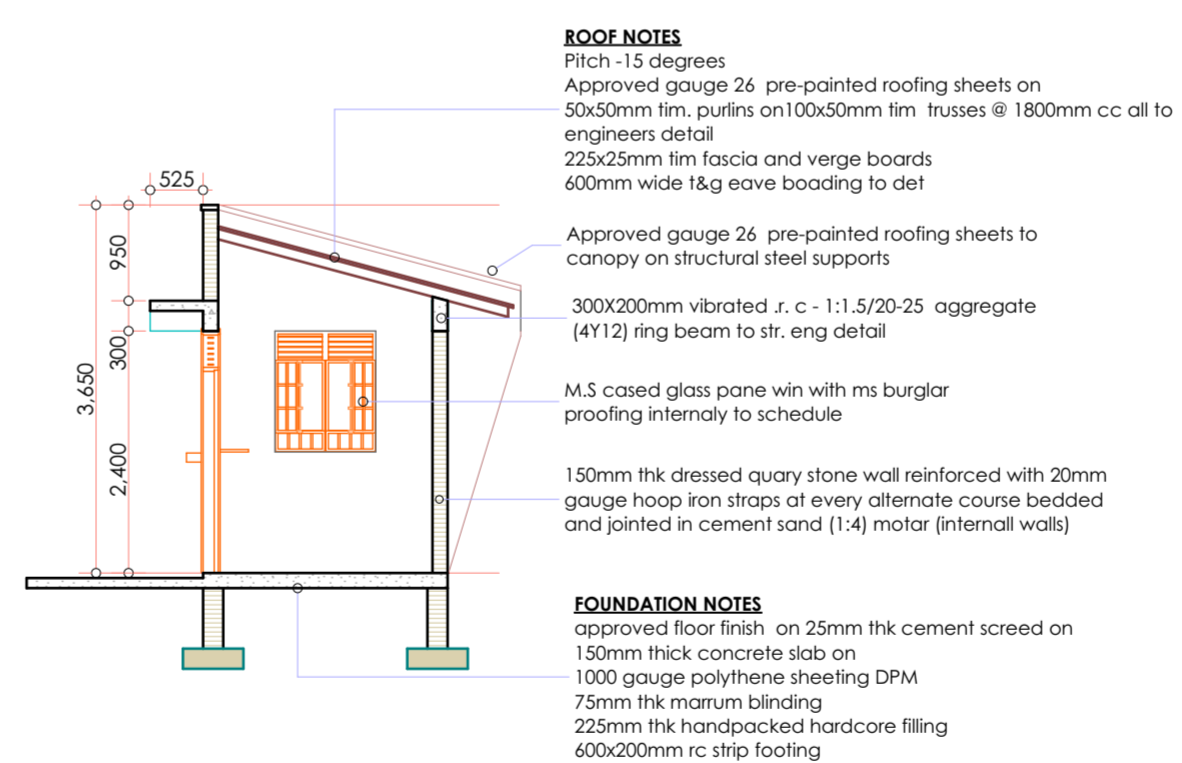
M.S cased glass pane win with ms burglar proofing internally to schedule

150mm thk dressed quarry stone wall reinforced with 20mm gauge hoop iron straps at every alternate course bedded and jointed in cement sand (1:4) motar (internal walls)

FOUNDATION NOTES

approved floor finish on 25mm thk cement screed on 150mm thick concrete slab on 1000 gauge polythene sheeting DPM 75mm thk marrum blinding 225mm thk handpacked hardcore filling 600x200mm rc strip footing

S2 Section
Scale 1:100



ROOF NOTES

Pitch -15 degrees
Approved gauge 26 pre-painted roofing sheets on 50x50mm tim. purlins on 100x50mm tim trusses @ 1800mm cc all to engineers detail
225x25mm tim fascia and verge boards
600mm wide t&g eave boading to det

Approved gauge 26 pre-painted roofing sheets to canopy on structural steel supports
300X200mm vibrated .r. c - 1:1.5/20-25 aggregate (4Y12) ring beam to str. eng detail

M.S cased glass pane win with ms burglar proofing internally to schedule

150mm thk dressed quarry stone wall reinforced with 20mm gauge hoop iron straps at every alternate course bedded and jointed in cement sand (1:4) motar (internal walls)

FOUNDATION NOTES

approved floor finish on 25mm thk cement screed on 150mm thick concrete slab on 1000 gauge polythene sheeting DPM 75mm thk marrum blinding 225mm thk handpacked hardcore filling 600x200mm rc strip footing

S4 Typical Section for Security/Revenue
Scale 1:100

- GENERAL NOTES:**
- All dimensions to be checked on site before commencement of any work. Use figured dimensions only. Any discrepancies should be reported to the Architect immediately.
 - All dimensions are in millimetres unless otherwise specified.
 - P.V denotes permanent vent.
 - Metal gutters & down pipe to suite.
 - All windows & doors to schedule.
 - All internal fittings to approval.

- CIVIL WORKS:**
- All soils under slabs and around external foundations to be treated for termite control.
 - All soils on cut embankments to be stabilised. Slope not to exceed the natural angle of repose.
 - All slabs at ground level to be poured over 1000 gauge polythene sheeting on 50mm stone blinding on hardcore.

- STRUCTURAL WORKS:**
- Refer to structural Engineers details for all r.c works.
 - Foundation depth to be determined on site to structural Engineer's approval.
 - All adjacent r.c work and masonry walls to be tied with strap irons at every course.

- MECHANICAL WORKS:**
- All sanitary fittings, doors, windows and lifts to schedules.
 - All plumbing and drainage to comply with city council's specifications.
 - All service ducts to be accessible from every floor.

- 1. FLOOR FINISHES**
- lime
 - coral rag
 - lime plaster
 - 300 X 300 X 10mm non slip ceramic tiles.
 - coconut fibre
 - wood parquet
 - wood sliding medium
 - 20mm thick random cut mazeras stones
 - 200 X 65 X 20mm mvule wood blocks in approved pattern laid with adhesive 20mm lime mortar
 - 40mm screed smooth finish(steel float).
 - 300 X 300 X 40mm porcelain floor tiles.
 - 30mm oak parquet flooring in approved pattern on 32mm 1:4 cement sand screed.

- 2. WALL FINISHES**
- 1:3 mortar finished in smooth cement screed painted to architects approval
 - 300 x 300 x 10mm thick ceramic tiles to 2400mm above finished floor level 3 coats matte paint to cornice.
 - sharp sand
 - lime mortar
 - 12mm lime plaster finish with glaze coat on render backing to approval.
 - 300 x 300 x 10mm mosaic tiles.
 - Moulded mvule timber wall panelling upto 1200mm above finished floor level exposed random cut coral stone to picture rail emulsion paint to cornice.

- 3. CEILING FINISHES**
- Unpainted water proofed rough cast lime plaster finish
 - 450mm x 450mm suspended gypsum board acoustic ceiling panels
 - 150mm x 45mm anti-termite boriti poles on lime fill soffit alternating with plastered ceiling strip at 300mm spacing
 - Mvule timber strips T&G

- 4. SKIRTING FINISHES**
- 300mmx100mmx10mm thick ceramic tiles
 - 10mm cement mortar on 25mm thick cement screed
 - 150mm high polished in-situ terrazzo
 - 100mmx25mm pre-cast concrete tiles
 - 150mm X 20mm mvule wood on plugged sand coated with polyurethane clear lacquer finish.

PROJECT TITLE: Proposed Bus Park at Nyamasaria

CLIENT: County Government of Kisumu - City of Kisumu

DRAWING TITLE:

DRAWING SCALE: AS SHOWN

STATUS: OUTLINE PROPOSALS DRAWINGS

REVISIONS

N ^o	DESCRIPTION	DATE	COMMENT

PROGRAMME

KENYA URBAN SURPORT PROGRAMME (KUSP)

ARCHITECT
DIRECTORATE OF HOUSING & URBAN DEVELOPMENT
P.O BOX 821-40100
KISUMU.

PLOT LR. NUMBER: KISUMU/ KASULE/.....

DRAWN BY: Nyamita P. **CHECKED BY:** Arch. Steve O. GOME [A685] **SHEET NUMBER:** 01